

Creasol SenderBatt

4 channels transmitter/duplicator

Main features:

Transmitted codes can be programmed as random code, or can be duplicated from existing remote controls.

External switch connections: up to 4 external switches. 2 switches can activate transmission only when they get closed (shorted), and 2 switches can activate transmission when get closed or open or in both cases: code transmitted when it gets closed can be different in respect to when it gets open;

Multifrequency: 433.92, 868.3, 288, 300, 306, 310, 315, 318, 330, 390, 404, 418 MHz

Selectable transmission power: from short range to very long range

All parameters, including frequency and power, are selectable through the Prog button.

Supplied by a 3V battery. Long battery life, normally more than 20 000 activations. Can be supplied externally by a 2.4-3V battery or power supply.

By default, transmits random codes, but can also duplicate almost any remote control that transmit a fixed code.

Applications:

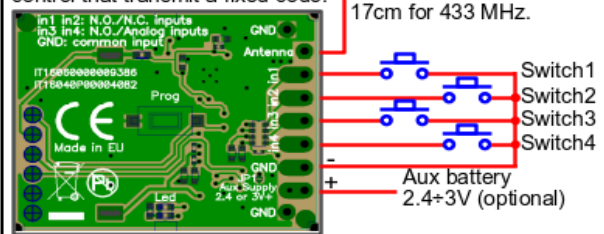
- * convert switches (from 1 to 4) into transmitters
- * can be used to send different codes when switch opens or closes, to control for example the air conditioning system (disable air conditioning when one or more windows get open, and enable when all windows get closed).

Fig. 1: Application diagram

Applications:

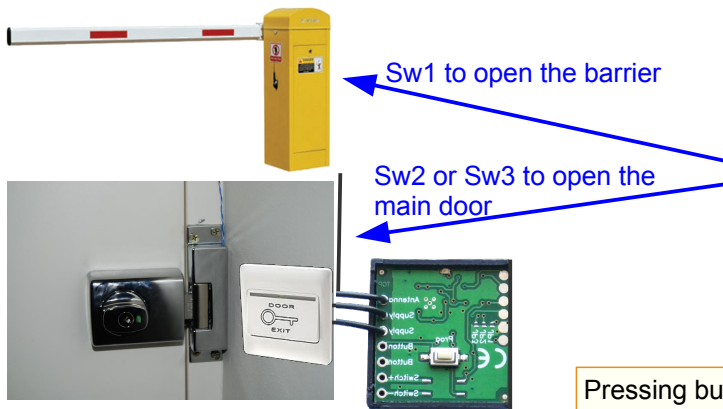
- * convert up to 4 switches into wireless switches (transmitters)
- * can be connected to intercom switches to transmit up to 4 different codes to open/close gate, barrier, main door,
- * it can be used with existing receivers (if compatible) and with our universal receivers.

Supplied by a 3V battery.
Can duplicate almost any remote control that transmit a fixed code.

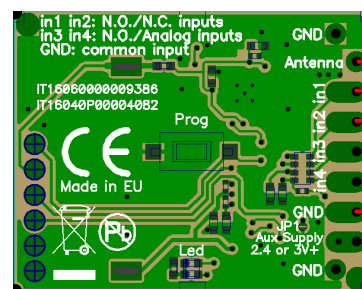


Application examples:

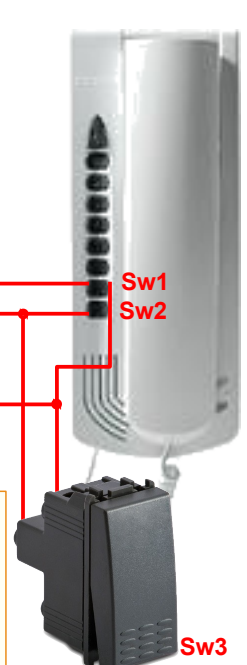
Connected to external switches to open traffic barrier, main door or other automations.



Creasol UniLock, connected to an electric strike door, permits to activate the electric strike by remote controls



Pressing button Sw1, the device transmits the code #1 used to open the traffic barrier .
Pressing button Sw2 or Sw3 (in parallel), the device transmits code #2 used to activate, for example, the electric strike plate of the main door.



Creasol SenderBatt

2-3 channels transmitter/duplicator + blackout monitor

Wireless connection of two switches to garden lights and well pump

